

Leisure Strategy 2013 – Update on progress

Bath and North East Somerset – *The place to live, work & visit*

Contents

- » Why Leisure?
- » Links to Health and Wellbeing
- » Initial work – Evidence Base for Built Facilities
- » Initial conclusions

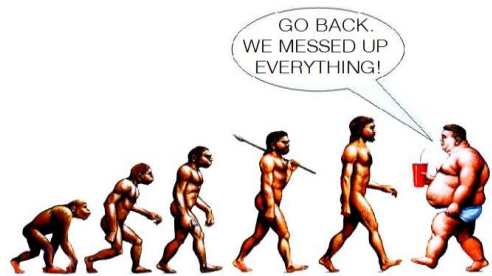
Bath and North East Somerset – *The place to live, work & visit*

Vision for discussion

- » 'To get more people, more active, more often'
- » Aim:
 - » 'Reducing health inequalities and improving health and wellbeing in Bath and North East Somerset'

Bath and North East Somerset – *The place to live, work & visit*

Why Leisure?



Bath and North East Somerset – *The place to live, work & visit*

Health and Wellbeing Strategy



Bath and North East Somerset – *The place to live, work & visit*

Health and Wellbeing Initial Consultation

- » Good engagement with the sector, good understanding of the role leisure can play
- » Want to see how a leisure strategy delivers on the outcomes of the H&WB strategy and Public Health outcomes framework
- » This consultation has been used to inform some initial headings and outcomes for the strategy

Bath and North East Somerset – *The place to live, work & visit*

Health and Wellbeing Initial Consultation

- » Public Health Team
- » Clinical Commissioning Group (Operational Leadership Team)
- » Health and Wellbeing Board
- » People Directorate SMT
- » Cllrs Simon Allen and David Dixon

Bath and North East Somerset – The place to live, work & visit

Health and Wellbeing – Emerging Priorities

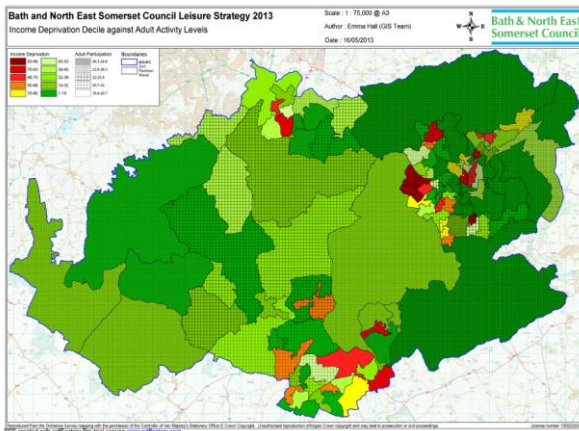
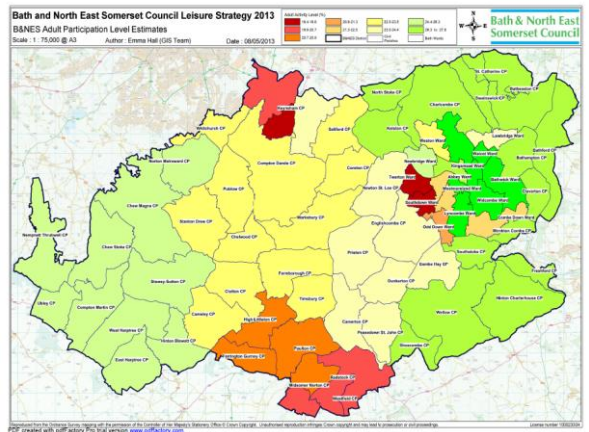
- » Targeted Health intervention schemes – P2H
- » Tackling obesity – including pre surgery weight loss
- » Improved health for middle aged men and older people
- » Increasing participation in active lifestyles – walking, cycling, swimming – cheap/free swimming initiatives for children
- » Managing long-term Conditions, ie pain management, diabetes, pulmonary, rheumatology, back pain, CHD
- » Family leisure opportunities
- » Providing education on healthy living
- » Outreach programmes
- » Reducing health inequalities

Bath and North East Somerset – The place to live, work & visit

The Strategy

- » Due to the time pressure of the impending procurement, the work on built facilities has been undertaken first
- » Approach taken is to gather evidence, understand supply and demand and then draw conclusions
- » This approach to be applied to remainder of strategy and potentially to draw together a number of strategies and work areas

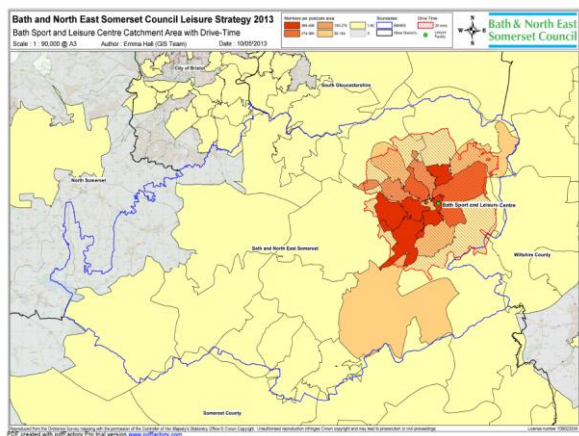
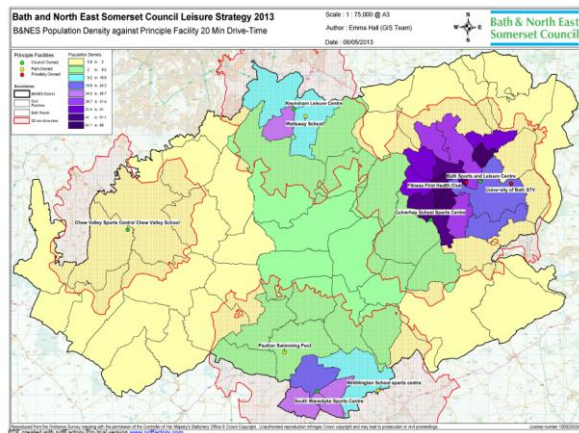
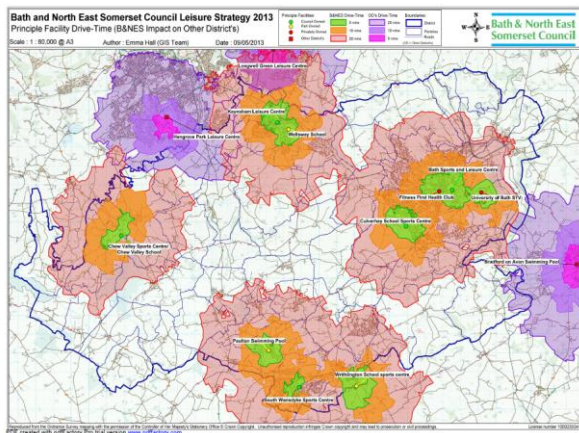
Bath and North East Somerset – The place to live, work & visit



Facilities

- » So what do we have in terms of facilities in B&NES?
- » There is a view that Bath has a lot of facilities, however many of them are outside the influence of the Council and do not provide open community access
- » A core of facilities provide the key community provision

Bath and North East Somerset – The place to live, work & visit



Bath & North East Somerset Council

Initial conclusions

- » The core facilities provide good geographical coverage
- » There is an oversupply of sports halls in Bath and Keynsham
- » Lack of swimming teaching space
- » Large latent demand for swimming, undersupply of teaching space – swimming lessons a key life skill and income driver
- » Under supply of fitness suites, large latent demand

Bath and North East Somerset – *The place to live, work & visit*

Bath & North East Somerset Council

Initial conclusions cont.



Bath and North East Somerset – *The place to live, work & visit*

Bath & North East Somerset Council

Initial Conclusions cont.



Bath and North East Somerset – *The place to live, work & visit*

Opportunities

- » Potential business case to replace Keynsham leisure centre with a new build facility
- » Remodel Bath Sports Centre to take advantage of commercial opportunities that are available
- » Increase size of fitness suite as South Wansdyke and increase studio space

Bath and North East Somerset – *The place to live, work & visit*

Opportunities cont.

- » By allowing aspects of the centres to be more commercially driven we can seek to support social and health objectives being delivered through the contract
- » Culverhay Sports Centre is well located to lead this work

Bath and North East Somerset – *The place to live, work & visit*

Feasibility

- » Work is progressing on outline feasibility to establish potential capital costs and resulting revenue positions
- » Additional commercial facilities being looked at to enhance affordability

Bath and North East Somerset – *The place to live, work & visit*

Feasibility cont.

- » The aims of feasibility work would be to seek to:
 - » Modernise the stock of facilities
 - » Step change in participation levels to deliver leisure strategy objectives
 - » Maximise income opportunities
 - » Enable the best possible deal through the new procurement process

Bath and North East Somerset – *The place to live, work & visit*

Procurement

- » This work will inform the procurement exercise which will start on December 2013
- » Include the recommendations in the specification to get a view from the market and to seek capital investment
- » To ensure that the importance of delivery against health outcomes is clear in specification
- » Evaluation process to include this is scoring mechanism

Bath and North East Somerset – *The place to live, work & visit*

Next Steps

Date	Action
December 2013	Draft Strategy as the basis for consultation and to start the procurement process
January 2014	Single member decision to consult on strategy and Issue OJEU notice to start procurement
January – February 2014	Consultation on draft strategy
March 2014	Strategy complete
March/April 2014	Cabinet sign off of strategy and next stages of the procurement process
September 2014	Decision on funding option(s) and sign off of shortlist of solutions
December 2014	Decision on preferred solution(s) and funding envelope funding

Bath and North East Somerset – *The place to live, work & visit*